

- x Sign up and be part of the positive change in our community!
- x Read how the CCE is benefiting the community!
- x Learn about the new, innovative program in the making: The Business Leadership Academy!

Faculty Spotlight

Who is Dr. Maria Claver?

Dr. Claver is an Assistant Professor from the Gerontology Graduate Program in the Department of Family and Consumer Sciences. She has played a pioneering role in promoting service learning through the introductory gerontology (GERN 400I) course. "It's a new field," Dr. Claver explains, "I think that it is kind of fun to teach students...this whole new world that students don't really know exists."

Business Leadership Academy

Our goal is to develop business professionals prepared to address the multiplicities of managing business and nonprofit organizations efficiently in under-served, economically challenged, and ethnic communities.



The genesis of this academic collaboration emerged from the progressive philosophy of CBA Dean Michael Solt, the ingenuity of CCE Executive Director Juan Benitez, and the advocacy of CBA Faculty Fellow Lynn Dymally. Conceptually, the project was born out of a request from Sandy Cajas, Executive Director of the Regional Hispanic Chamber of Commerce (RHCC), to have CBA assist in the Chamber's mission to strengthen its ability to better serve its membership by using the skills of CBA student interns. Dean Solt sought out the assistance of the CCE and appointed

permanent homes, developing an array of projects and services that complement the Villages' already exceptional housing facilities.

On April 21, 2011 the Center for Community Engagement (CCE) held our campus's first Community Engagement Institute at the Faculty Center for Professional Development. This half-day institute focused on sharing information, best practices, and highlighting the different opportunities, resources, and support available for faculty to connect with communities, including but not limited to: Service Learning, Community-based Participatory Research, risk management, and other community engagement models, projects, activities, and approaches on campus.

The institute was designed both for faculty that were "new" to community engagement but had an interest in finding out more as well as for more

It's increasingly difficult to ignore the impact and influence of social media in today's society, but for many it is still equated with homemade video clips of crazy pet tricks, kamikaze cartoon birds catapulting themselves at pigs, and a proliferation of virtual farmers. Social media however, is also becoming a valuable resource for community engagement, advocacy and other social action.

Environmentalists can connect through Facebook with groups like the [Surfrider Foundation—Long Beach Chapter](#) and [Wetlands & Wildlife Care Center](#). If you're all about sustainability, did you know [Long Beach Grows](#) or [The Long Beach Depot For Creative ReUse](#)? For those whose passion is for economic justice, there's the [Long Beach Coalition for Good Jobs & a Healthy Community](#) and the [Long Beach Affordable Housing Coalition](#). If you want to understand homelessness in Long Beach, you can hear first-person accounts on YouTube by documentarian [Jack C Smith](#).

Social media not only addresses social issues but also addresses ways to approach those issues. To find models and

and gui0 gET 38.88 2w(ose 0015 Tw 4.44 0 T9lt)Tj 93(e p TmcET 35(e)y)1(,r gutF64 re f0f47.s Tw 0 pn88 address)5(et eddres2f09h-1.327 Td

Student Staff, 2010-11

Thanks for all of your hard work!!!

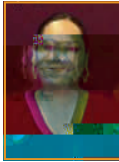


CCE Staff

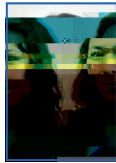
Carina Sass
Associate Director
(562) 985-2376
csass@csulb.edu



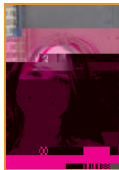
Carmen Arreola
Administrative Support
Coordinator
(562) 985-7019
marreal3@csulb.edu



Monica Delgado
Community Engagement
Support Coordinator
(562) 985-2307
mdelgado@csulb.edu



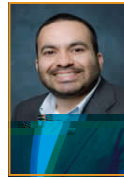
Kendra Jennis
Long Beach AmeriCorps
Planning Coordinator
(562) 985-7369
kjennis@csulb.edu



Academic Services Building, Room 127
Long Beach, CA 90840-2007
Phone: (562) 985-7131
Fax: (562) 985-2129
Mailstop: 2007
Email: cce@csulb.edu

Visit us on the Web at
[http://www.csulb.edu/
cce](http://www.csulb.edu/cce)

Faculty Fellows



Dr. Lynn Dymally
2010-11
CBA Fellow for Economic
Development
ldymally@csulb.edu



Dr. Gary Hytrek
Fall 2010
Community-based
Participatory Research
ghytrek@csulb.edu



Dr. Malcolm Finney
Fall 2010
HSIAC Community-based
Participatory Research
mfinney@csulb.edu

Dr. Rigoberto Rodriguez
2010-11
Community Development
rrodri14@csulb.edu